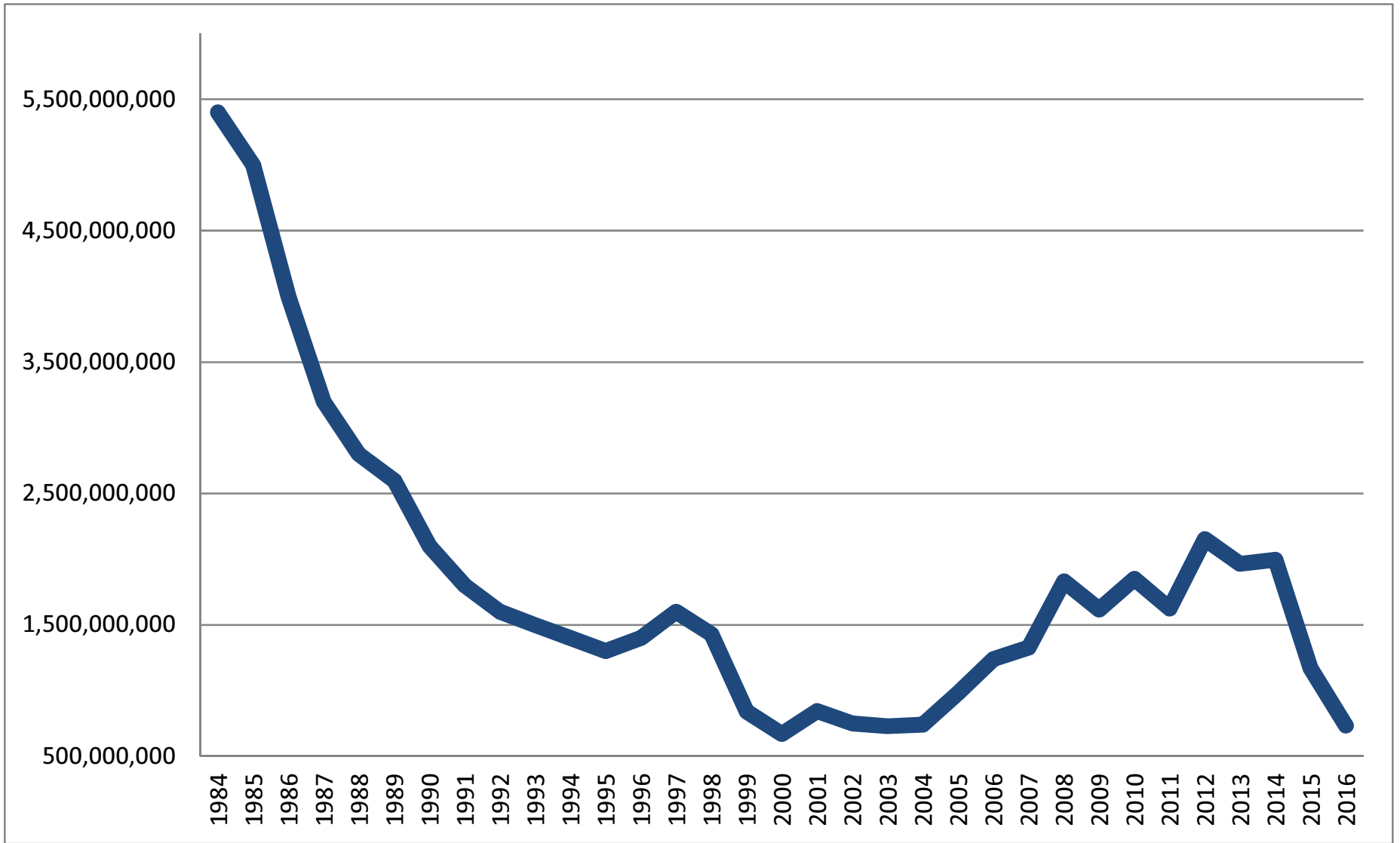


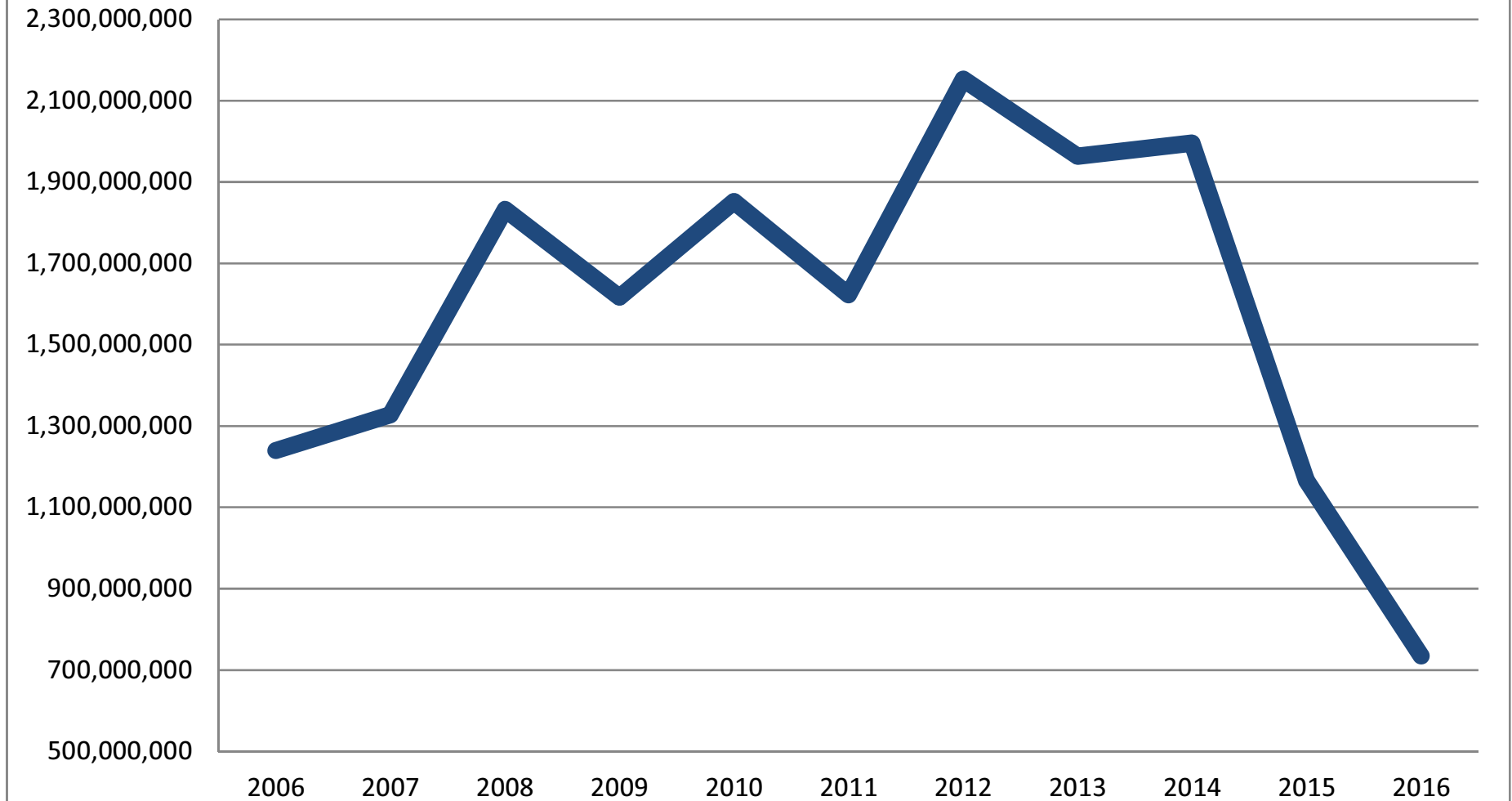


# ISISD Budget Workshop

2016-2017 Preliminary Budget



## Last 10 Years



Iraan-Sheffield ISD  
 State Aid Comparison  
 State Aid r4 84 Leg / \$1.06 Tax Rate

<b>Recap of State Aid By Funding Source:</b>	<b>2015-2016</b>	<b>2016-2017</b>	<b>2017-2018</b>
Available School Fund (ASF)	87,548	181,634	181,634
Foundation School Fund (FSF)	3,035,564	3,102,619	221,475
<b>TOTAL STATE AID - ALL FUNDS</b>	<b>3,123,112</b>	<b>3,284,253</b>	<b>403,109</b>

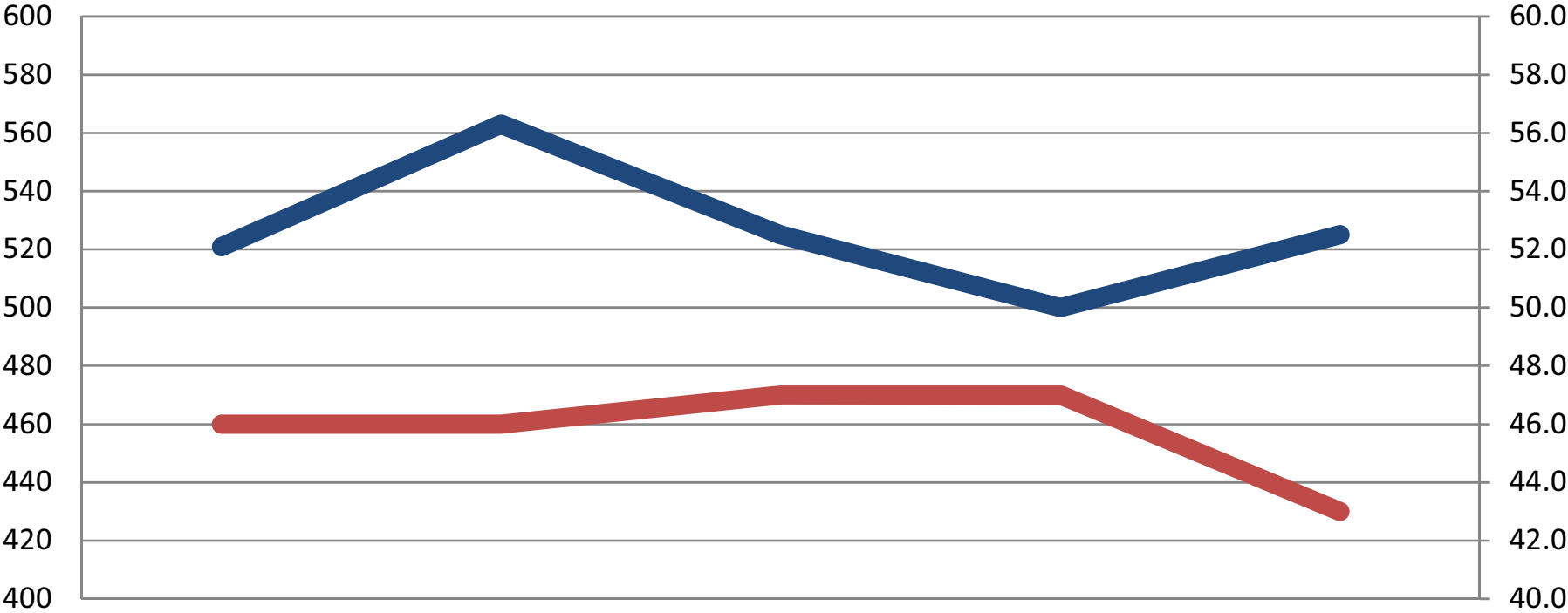
<b>Revenue Comparison</b>	<b>2015-2016</b>	<b>2016-2017</b>	<b>2017-2018</b>
M&O Rev From State	3,123,112	3,284,253	403,109
M&O Rev From Local Taxes (\$1.00; net of recapture)	3,270,335	3,096,026	4,937,258
M&O Rev From Local Taxes (\$.06; no recapture)	687,736	417,703	417,703
<b>TOTAL STATE/LOCAL M&amp;O REVENUE</b>	<b>7,081,183</b>	<b>6,797,982</b>	<b>5,758,070</b>

<b>Total Recapture Payments To TEA</b>	<b>8,191,930</b>	<b>3,865,692</b>	<b>2,024,461</b>
--	------------------	------------------	------------------

<b>FUND</b>	<b>GRANT</b>	<b>PURPOSE</b>	<b>15-16 ALLOC</b>	<b>16-17 ALLOC</b>	<b>DIFFERENCE</b>
211.00	TITLE I, PART A	Improving Basic Programs	52,782	47,504	(5,278)
211.01	TITLE I, PART D	Delinquent Programs	139,717	94,694	(45,023)
255.00	TITLE II, PART A	Tchr/Princ Training & Recruiting	20,976	20,282	(694)
289.00	REAP GRANT	Small Rural School Achievement	39,025	-	(39,025)
429.00	PK Grant	Pre-K Program	-	8,757	8,757
<b>Total</b>			<b>252,500</b>	<b>171,237</b>	<b>(81,263)</b>

# Student/Teacher Ratio

Enrolled Students FTE Teaching Staff



12-13

13-14

14-15

15-16

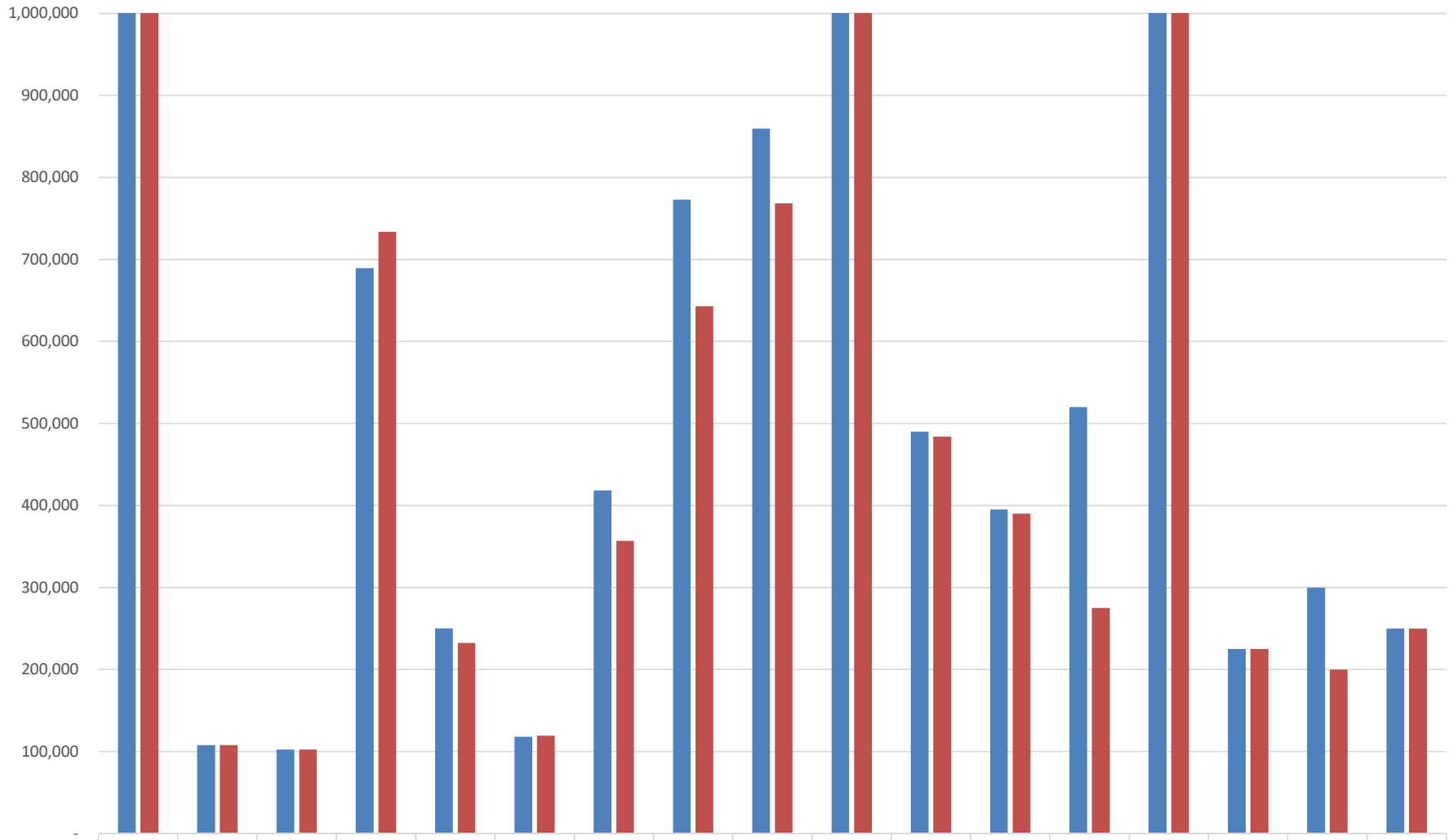
16-17

# Iraan-Sheffield Independent School District

## 2016-2017 Proposed General Fund Budget

	General Fund as of July 2015-2016	Per Pupil 525	General Fund SB1 r6c 2016-2017	Per Pupil 525	Comparison of 15-16 to 16-17 % Change
5700 Local & Intermediate Revenue	12,779,000	24,341	8,120,500	15,468	-36.45%
5800 State Revenue	3,767,049	7,175	3,507,000	6,680	-6.90%
<b>Total Revenues</b>	<b>16,546,049</b>	<b>31,516</b>	<b>11,627,500</b>	<b>22,148</b>	<b>-29.73%</b>
7000 Other Resources	-	-	3,250,000	6,190	#DIV/0!
<b>Total Revenues and Other Resources</b>	<b>\$ 16,546,049</b>	<b>\$ 31,516</b>	<b>\$ 14,877,500</b>	<b>\$ 28,338</b>	<b>-10.08%</b>
<b><u>Distribution of Budget Funds by Function</u></b>					
11 Instruction	3,963,310	7,549	3,867,475	7,367	-2.42%
12 Instructional Resources & Media Svcs	108,000	206	108,000	206	0.00%
13 Curriculum Dev & Instr Staff Dev	102,350	195	102,500	195	0.15%
23 School Leadership	689,600	1,314	733,750	1,398	6.40%
31 Guidance, Counseling & Evaluation Svcs	250,050	476	232,250	442	-7.12%
33 Health Services	118,325	225	119,250	227	0.78%
34 Student Transportation	418,450	797	357,000	680	-14.69%
36 Extracurricular Activities	773,000	1,472	642,975	1,225	-16.82%
41 General Administration	859,500	1,637	768,350	1,464	-10.61%
51 Plant Maintenance & Operations	1,619,700	3,085	1,500,500	2,858	-7.36%
53 Data Processing Services	490,100	934	484,000	922	-1.24%
71 Debt Service	395,000	752	390,000	743	-1.27%
81 Facilities Acquisition/Construction	520,000	990	275,000	524	-47.12%
91 WADA Purchases (Recapture)	8,000,000	15,238	4,250,000	8,095	-46.88%
93 Payments to SSA Fiscal Agents	225,000	429	225,000	429	0.00%
97 CH 313 Tax Credit	300,000	571	200,000	381	-33.33%
99 Tax Appraisal and Collection	250,000	476	250,000	476	0.00%
<b>Total Expenditures</b>	<b>\$ 19,082,385</b>	<b>\$ 36,347</b>	<b>\$ 14,506,050</b>	<b>\$ 27,631</b>	<b>-23.98%</b>
8000 Operating Transfers Out	300,000	571	300,000	571	0.00%
<b>Total Expenditures and Other Uses</b>	<b>\$ 19,382,385</b>	<b>\$ 36,919</b>	<b>\$ 14,806,050</b>	<b>\$ 28,202</b>	<b>-23.61%</b>
<b>Excess (Deficiency) Revenues Over Expenses</b>	<b>\$ (2,836,336)</b>		<b>\$ 71,450</b>		

### Comparison of Budgeted Functions



	11	12	13	23	31	33	34	36	41	51	53	71	81	91	93	97	99
■ 2015-2016	3,963,31	108,000	102,350	689,600	250,050	118,325	418,450	773,000	859,500	1,619,70	490,100	395,000	520,000	8,000,00	225,000	300,000	250,000
■ 2016-2017	3,867,47	108,000	102,500	733,750	232,250	119,250	357,000	642,975	768,350	1,500,50	484,000	390,000	275,000	4,250,00	225,000	200,000	250,000



## Iraan-Sheffield Independent School District 2016-2017 Proposed Food Service Budget

	Food Service Fund as of July 2015-2016	Food Service Fund SB1 r6c 2016-2017	Comparison of 15-16 to 16-17 % Change
5750 Local & Intermediate Revenue	20,000	22,500	12.50%
5800 State Revenue	1,250	1,250	0.00%
5900 Federal Revenue	102,000	110,000	7.84%
7900 Other Resources/Non Operating Revenue	300,000	300,000	0.00%
<b>Total Revenues and Other Resources</b>	<b>\$ 423,250</b>	<b>\$ 433,750</b>	<b>2.48%</b>
<u>Distribution of Budget Funds by Function</u>			
35 Food Services	430,650	416,500	-3.29%
<b>Total Expenditures</b>	<b>\$ 430,650</b>	<b>\$ 416,500</b>	<b>-3.29%</b>
<b>Excess (Deficiency) Revenues Over Expenses</b>	<b>\$ (7,400)</b>	<b>\$ 17,250</b>	

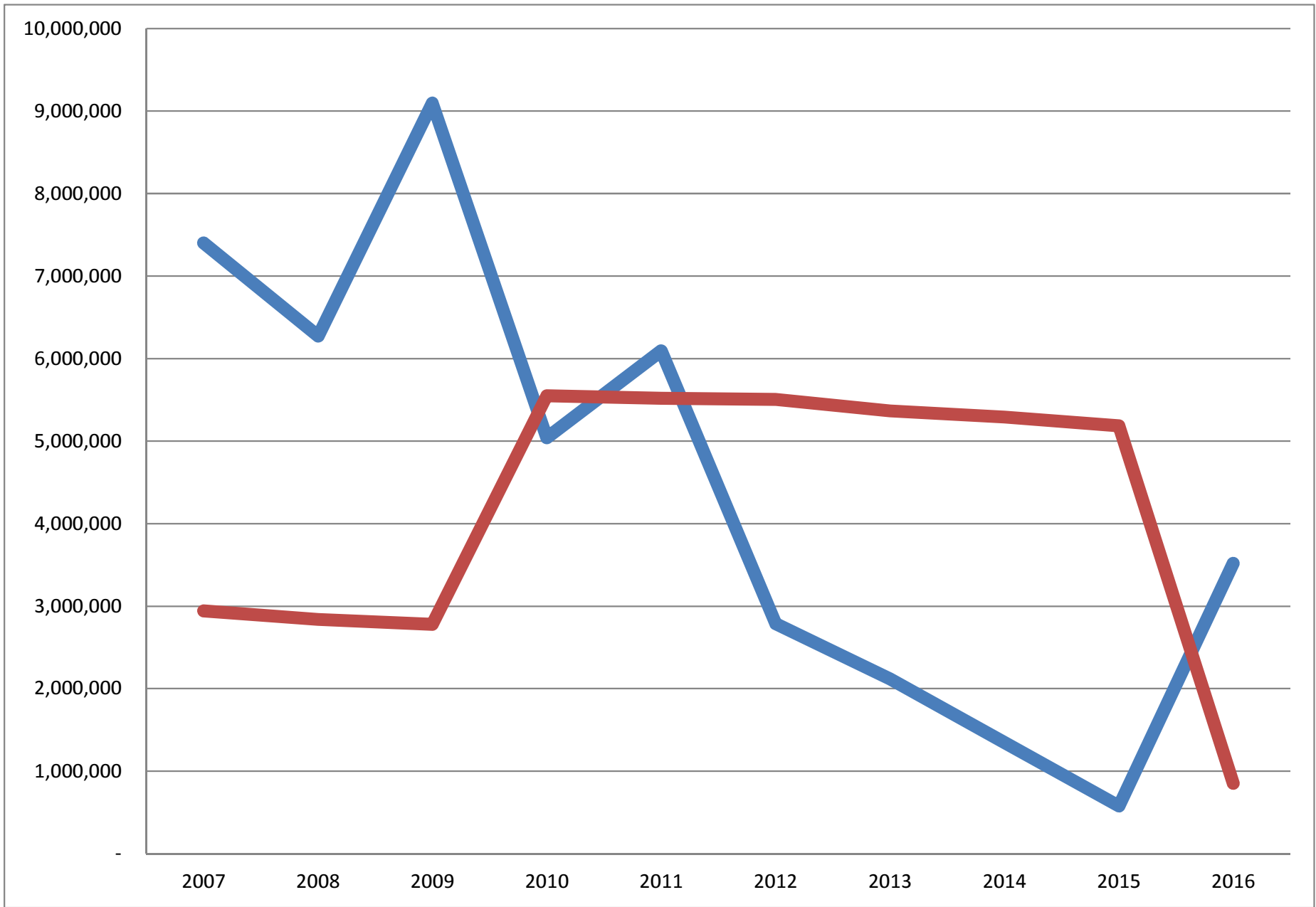
# Iraan-Sheffield Independent School District

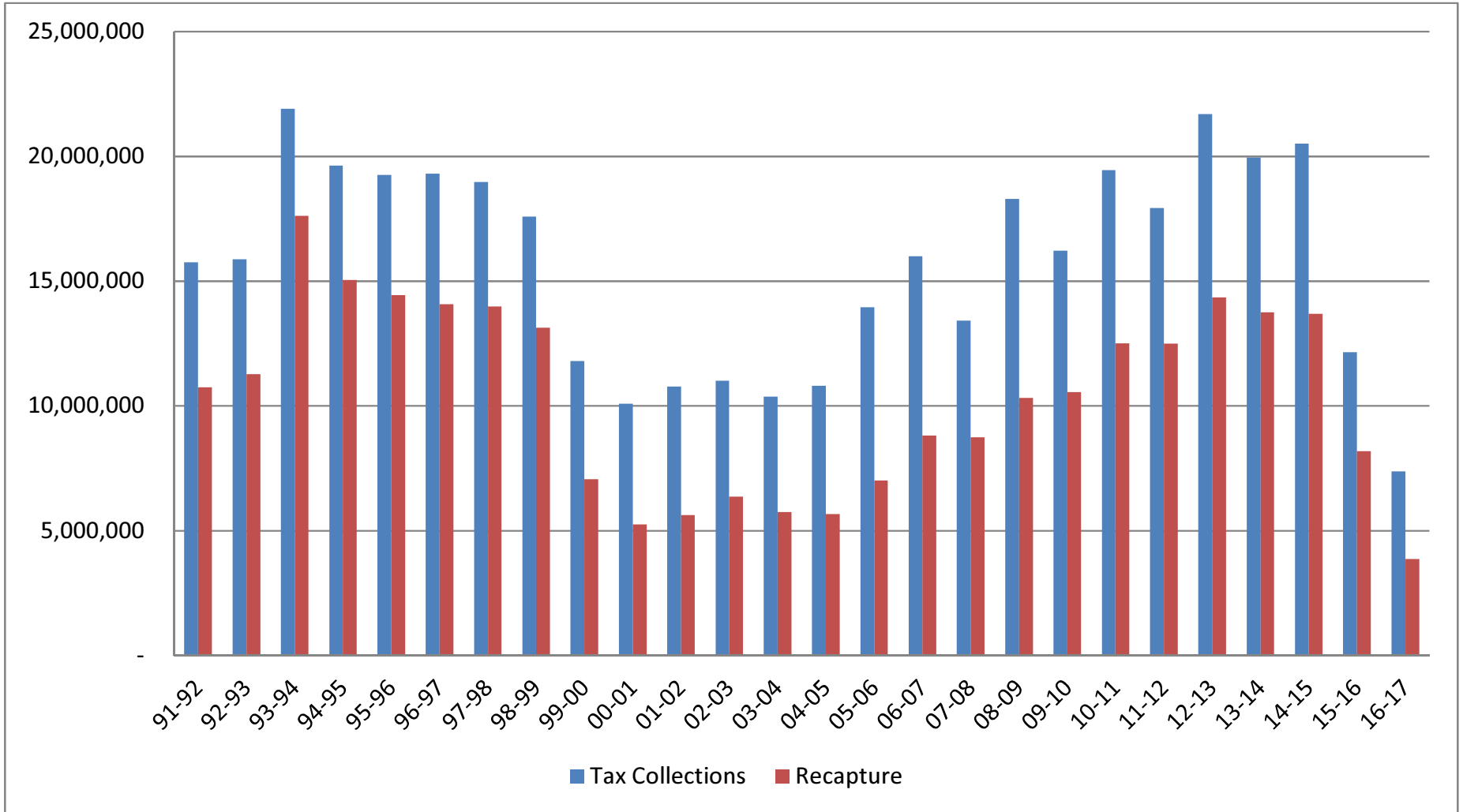
## 2016-2017 Proposed I & S Budget

	I&S Fund as of July 2015-2016	I&S Fund SB1 r6c 2016-2017	Comparison of 15-16 to 16-17 % Change
5700 Local & Intermediate Revenue	1,112,000	841,500	-24.33%
<b>Total Revenues and Other Resources</b>	<b>\$ 1,112,000</b>	<b>\$ 841,500</b>	<b>-24.33%</b>
<u>Distribution of Budget Funds by Function</u>			
71 I & S Expenses	1,050,500	876,900	-16.53%
<b>Total Expenditures</b>	<b>\$ 1,050,500</b>	<b>\$ 876,900</b>	<b>-16.53%</b>
<b>Excess (Deficiency) Revenues Over Expenses</b>	<b>\$ 61,500</b>	<b>\$ (35,400)</b>	

## Iraan-Sheffield Independent School District 2016-2017 Proposed Self Funded Insurance Budget

	EMB Fund as of July 2015-2016	EMB Fund SB1 r6c 2016-2017	Comparison of 15-16 to 16-17 % Change
5700 Local & Intermediate Revenue	804,500	751,500	-6.59%
<b>Total Revenues and Other Resources</b>	<b>\$ 804,500</b>	<b>\$ 751,500</b>	<b>-6.59%</b>
<u>Distribution of Budget Funds by Function</u>			
41 EMB Expenses	965,000	1,065,000	10.36%
<b>Total Expenditures</b>	<b>\$ 965,000</b>	<b>\$ 1,065,000</b>	<b>10.36%</b>
<b>Excess (Deficiency) Revenues Over Expenses</b>	<b>\$ (160,500)</b>	<b>\$ (313,500)</b>	





### Last 10 Years

